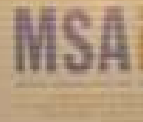




Thank You

to this evening's
generous Sponsors



Douglas Alton
Janis Alton
Lori Ellis
Boran Hrelja
Pay Morrissey
Linda Thomas
Anita Van Zeumeren

The Port Credit Village Project held a public maquette on September 16, 2010 for the finalists in their ARTconnect project, which aims to bring a public sculpture to Port Credit in honour of the 175th Anniversary.



The winning design by Philip H. Cote was chosen by the PCVP jury on **Oct. 21, 2010.**



Medicine wheel on the top of the earth mound.







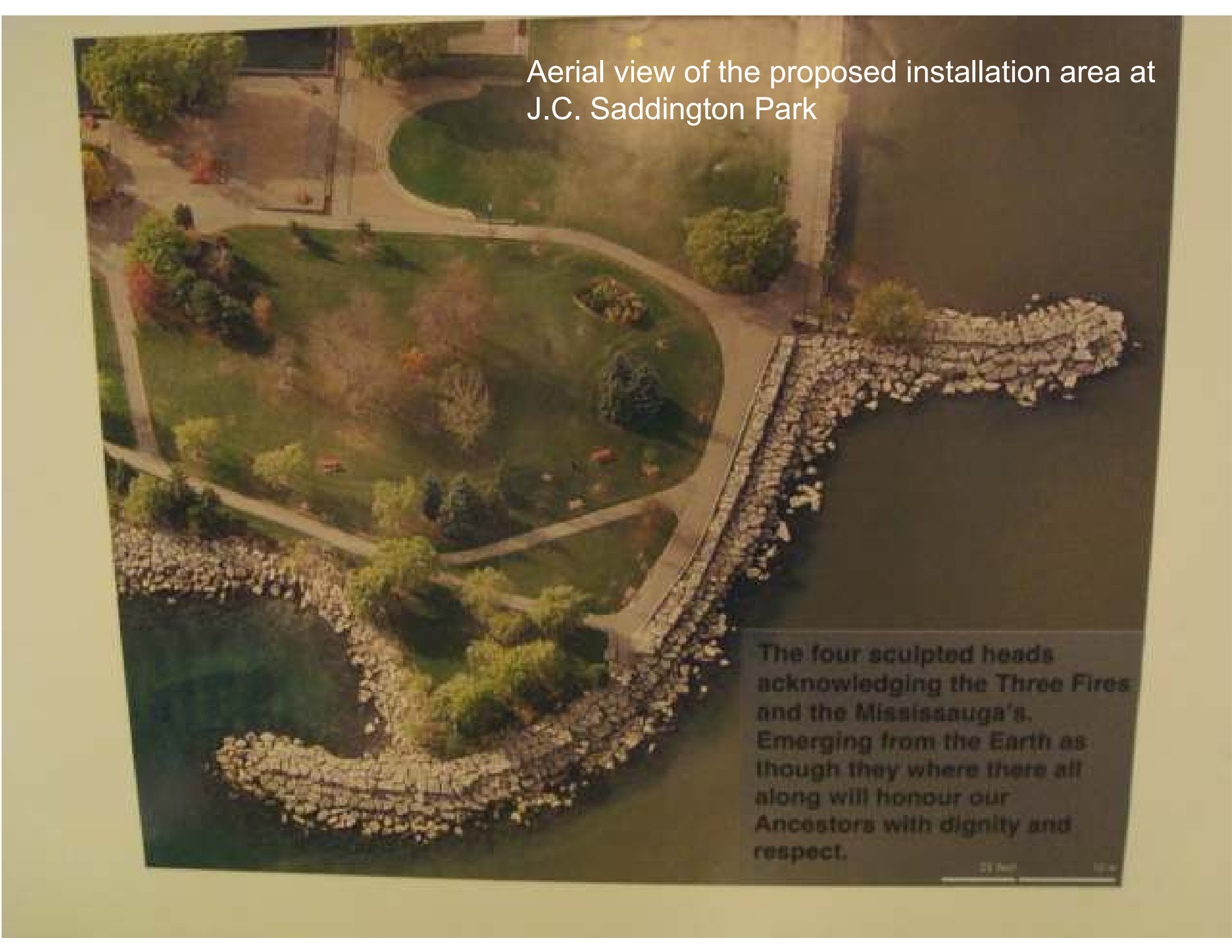
PHILIP H. COTE

Simulation of the sculpture installation at J.C. Saddington Park



PHILIP H. COTE

Simulation of the sculpture installation at J.C. Saddington Park



Aerial view of the proposed installation area at J.C. Saddington Park

The four sculpted heads acknowledging the Three Fires and the Mississauga's. Emerging from the Earth as though they were there all along will honour our Ancestors with dignity and respect.



A walkabout of the proposed area at J.C. Saddington Park....











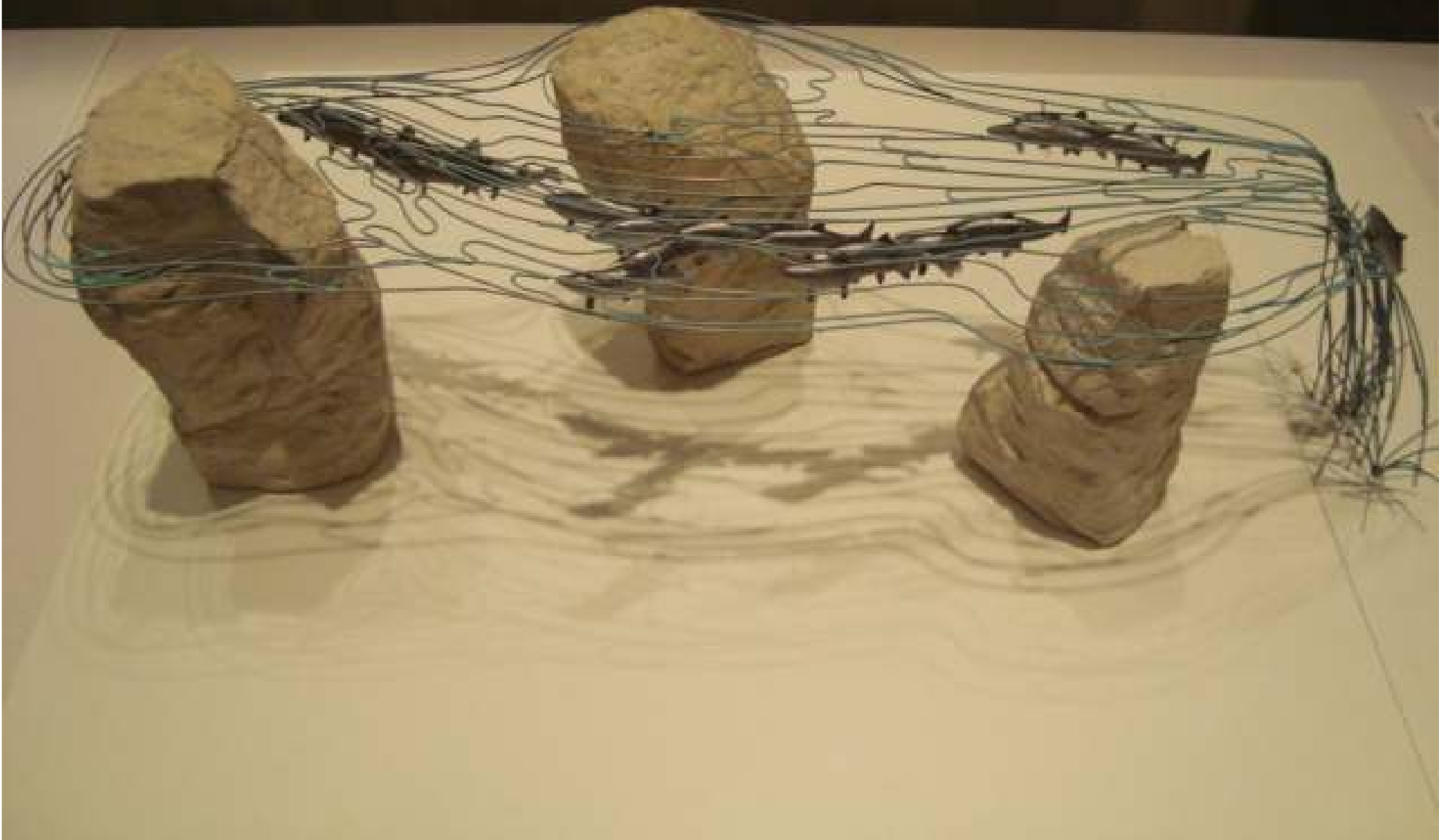


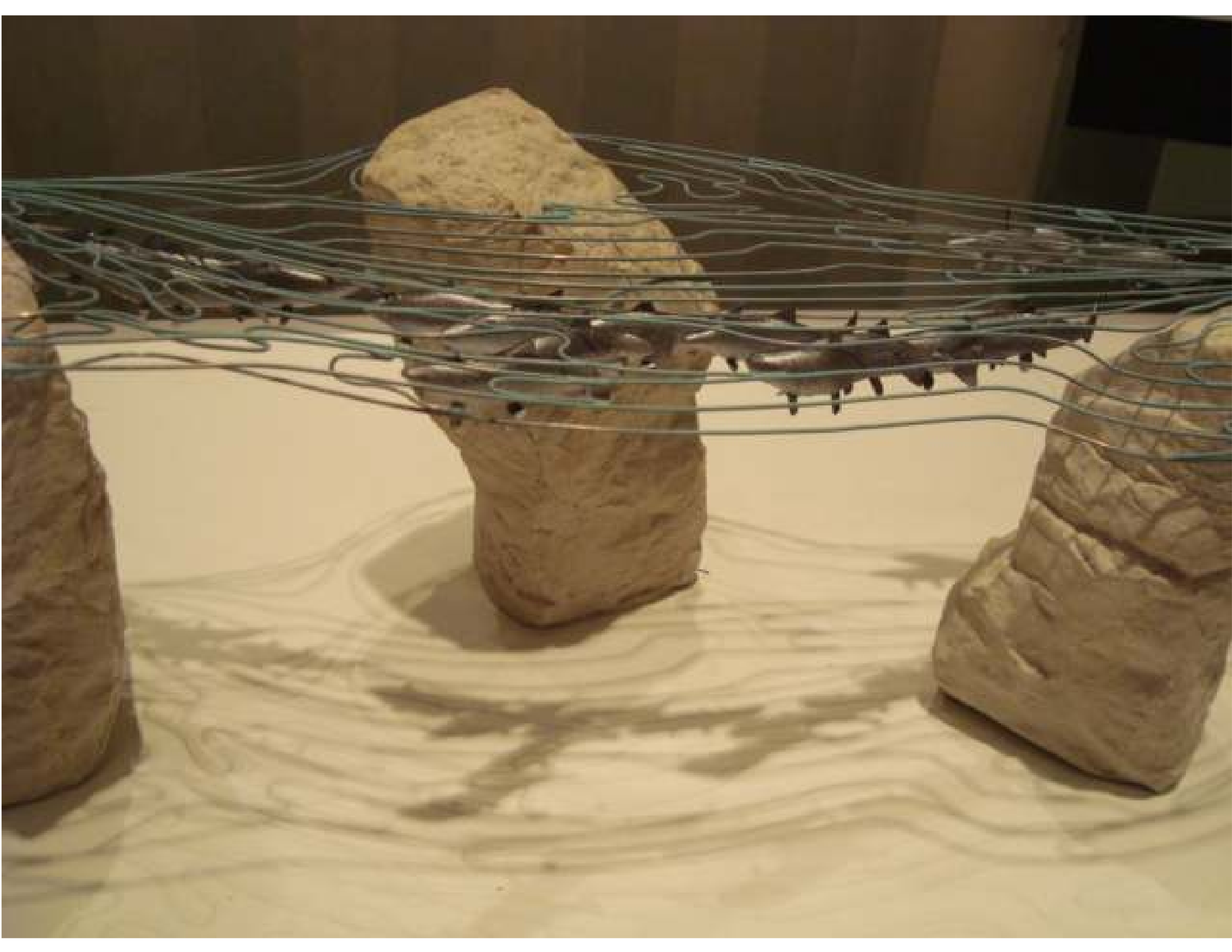






Maquette by Peter Sutherland: "The Current", proposed by the artist to be installed beside the Port Credit Library.







Maquette by Ludzer Vandermolten & Associates: "The Turtle", proposed by the artists to be installed in Port Credit Memorial Park by the Credit River.





Maquette by David General: “Maanjidowin – The Gathering”, proposed by the artist to be installed in St. Lawrence Square overlooking Lake Ontario.



Thesis
The purpose of this research is to explore the relationship between the artist's work and the cultural context in which it is created. This study will focus on the artist's use of traditional techniques and materials, and how these are adapted to contemporary themes and subjects.



Researcher's Statement
The purpose of this research is to explore the relationship between the artist's work and the cultural context in which it is created. This study will focus on the artist's use of traditional techniques and materials, and how these are adapted to contemporary themes and subjects.

Artist's Statement
I am interested in the relationship between the artist's work and the cultural context in which it is created. This study will focus on the artist's use of traditional techniques and materials, and how these are adapted to contemporary themes and subjects.



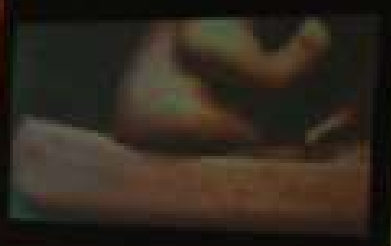
Background and Field Data
This section provides background information on the artist's work and the cultural context in which it is created. It includes a list of key terms and concepts, and a brief overview of the research methodology.



Artist's Statement (cont.)
I am interested in the relationship between the artist's work and the cultural context in which it is created. This study will focus on the artist's use of traditional techniques and materials, and how these are adapted to contemporary themes and subjects.

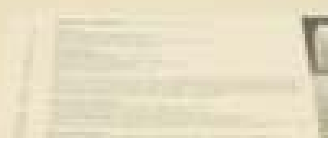


Researcher's Statement (cont.)
The purpose of this research is to explore the relationship between the artist's work and the cultural context in which it is created. This study will focus on the artist's use of traditional techniques and materials, and how these are adapted to contemporary themes and subjects.



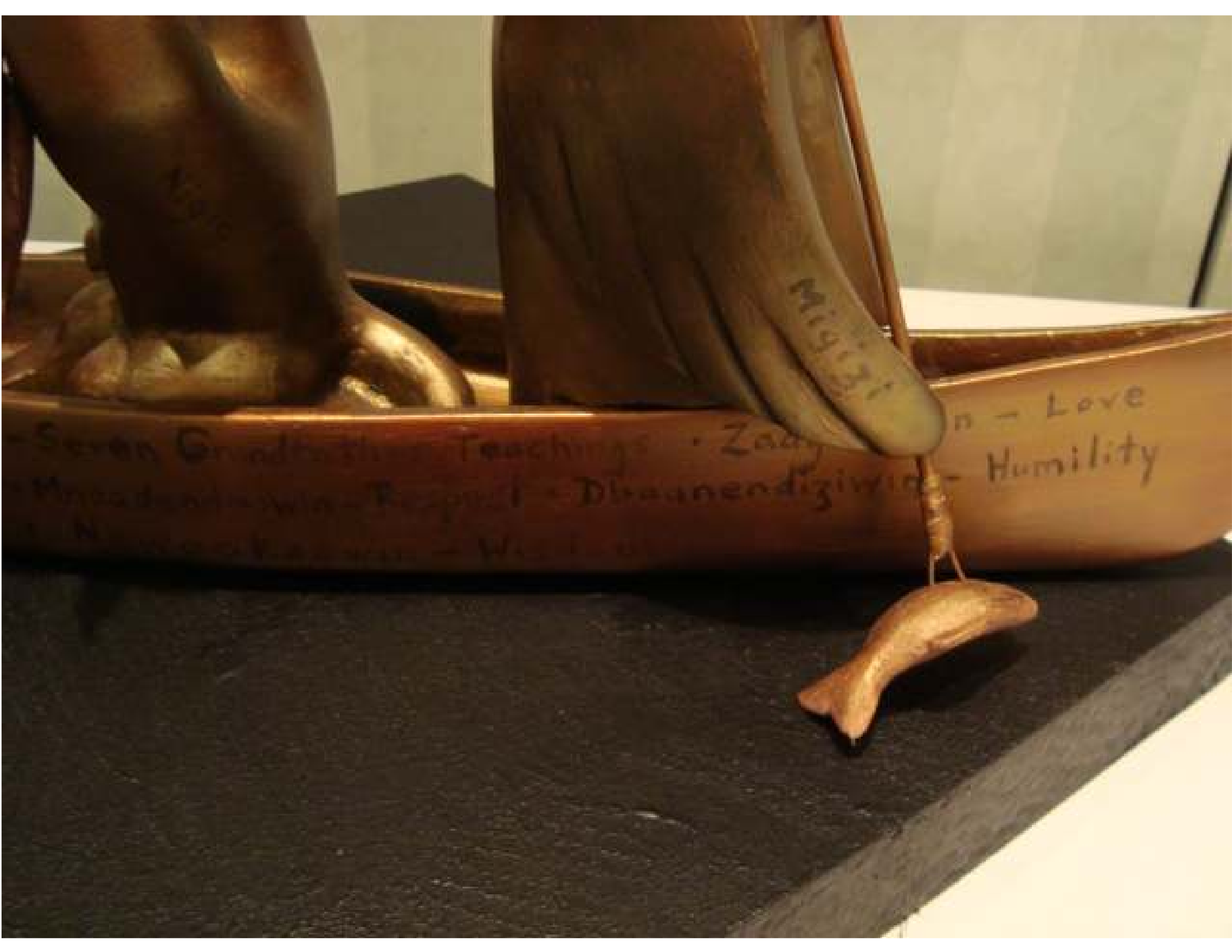
Researcher's Statement (cont.)
The purpose of this research is to explore the relationship between the artist's work and the cultural context in which it is created. This study will focus on the artist's use of traditional techniques and materials, and how these are adapted to contemporary themes and subjects.

Researcher's Statement (cont.)
The purpose of this research is to explore the relationship between the artist's work and the cultural context in which it is created. This study will focus on the artist's use of traditional techniques and materials, and how these are adapted to contemporary themes and subjects.









Migizi

Love
Humility

Seven Great Teachings
Zady
Dhaanendigiwio
W.